

ROE_S (28) (Flash)

From Z88

ROE

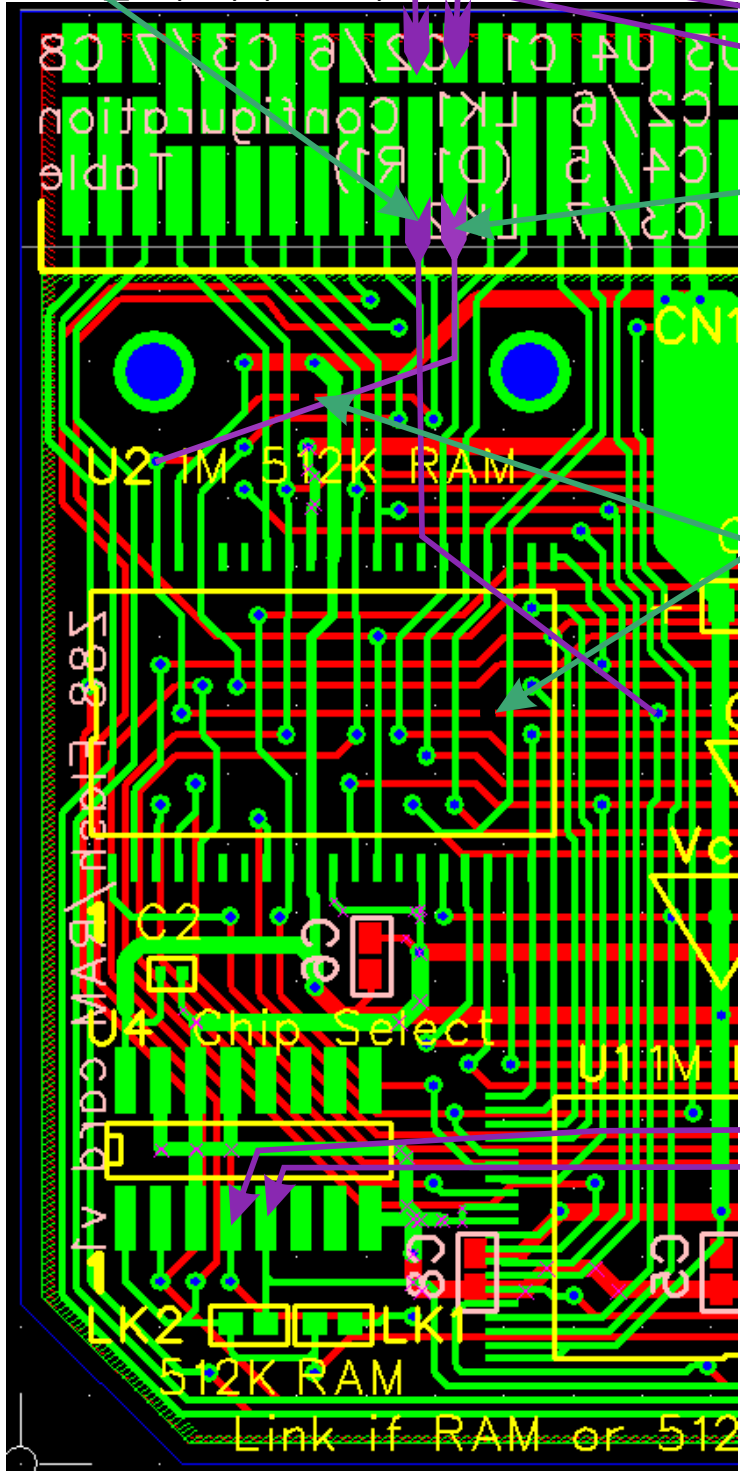
POE

POE_S (27)
(RAM)

Cut tracks
Note: These are the same cuts as before

/CE ON BUS
(30)

/CE_RAM
/CE_FL



U2 1M 512K RAM

CN1

500 Flash / BVA / COLD

C2

C3

U4 Chip Select

U1 1M

LK2

LK1

512K RAM

Link if RAM or 512K