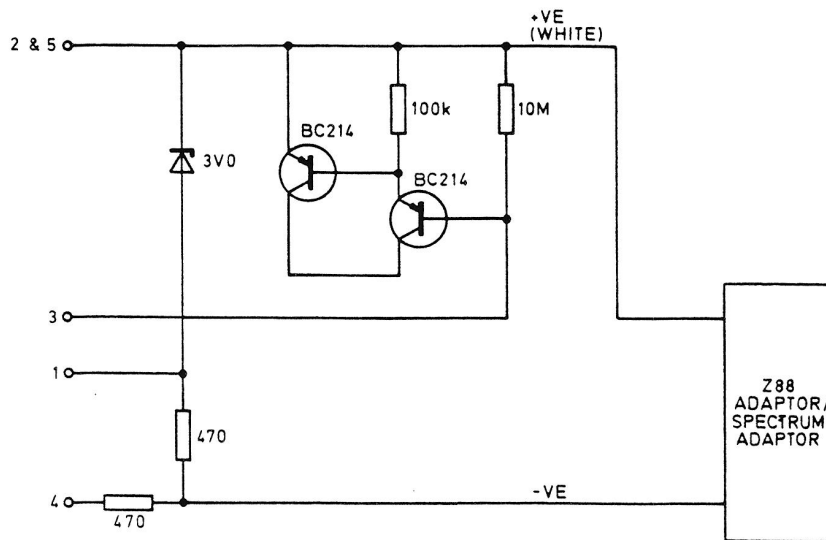


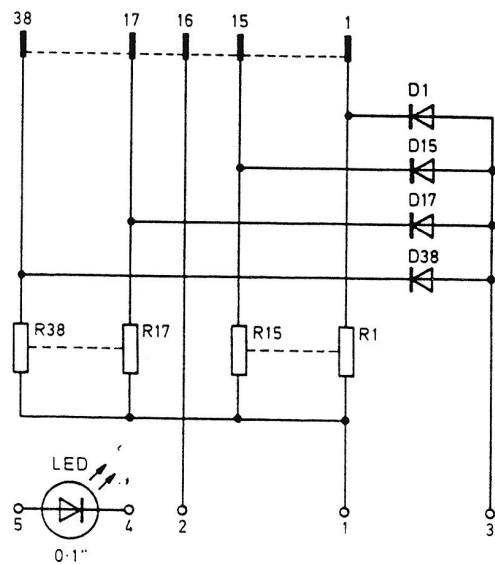
- NOTES:
1. The principal aim is to check that every wire is connected to the 9-way socket including the 10M between pin 1 and the socket frame.
  2. For the serial port to work, both CTS and DCD must be high.

FIGURE A.2 RS232 LOOPBACK TEST PLUG



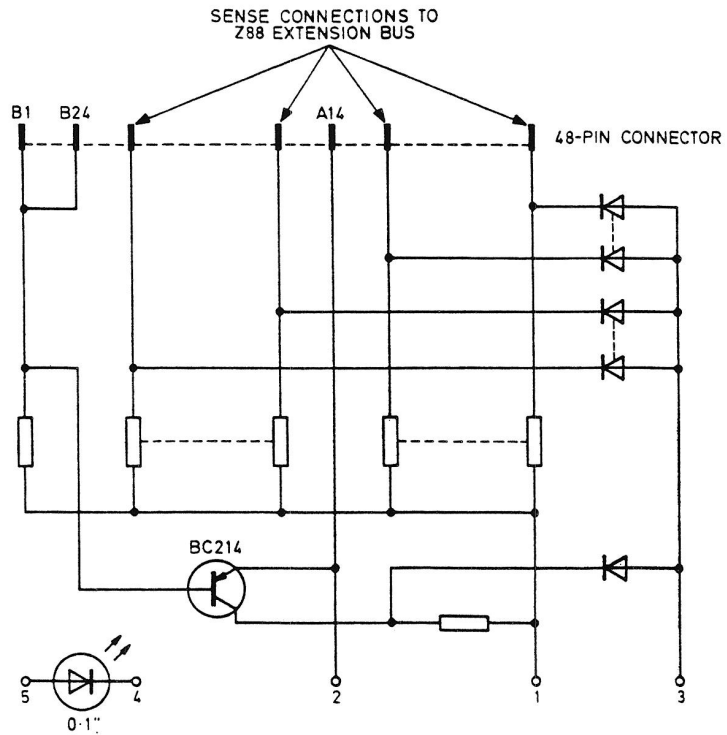
- NOTES:
1. The 'test head' of both the slot connector tester and the bus extension connector tester use the above circuit.
  2. The LED is connected between pins 4 and 5 on the test connector test head.
  3. A 0.4 mm thick spacer is installed between the connector side of the pcb and the plastic housing. This builds in a deliberate spacing so that the test pcb will only make contact provided all 38 connector springs are positive.
  4. The Z88 mains adaptor is connected for the slot connector tester and the Spectrum adaptor is connected for the bus extension tester.

FIGURE A.3 CARD TESTER CIRCUIT FOR SLOT CONNECTORS AND BUS EXTENSION CONNECTOR



- NOTES: 1. There is no R16 or D16 connected.  
 2. All resistors are 1 Mohm, all diodes 1N4148.

FIGURE A.4 SLOT TESTER TEST HEAD CIRCUIT DIAGRAM



- NOTES:
1. Slot is in pin 18 position.
  2. Side A of the connector is the component side.
  3. All resistors are 1 Mohm, all diodes 1N4148.
  4. GND goes to connector pin A14.
  5. Sense connections are made to all except pins A14, B1 and B24.

FIGURE A.5 BUS EXTENSION TESTER TEST HEAD CIRCUIT DIAGRAM